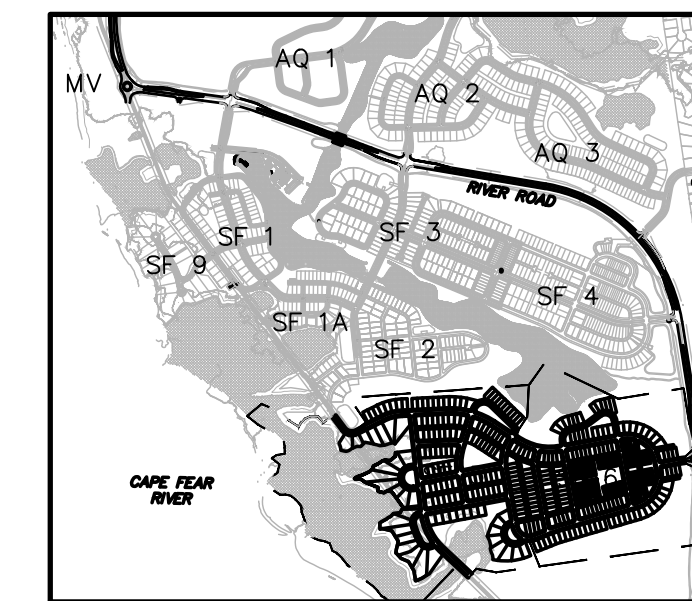


RIVERLIGHTS CONVENTIONAL - PHASE 5 & 6

CITY OF WILMINGTON, NC

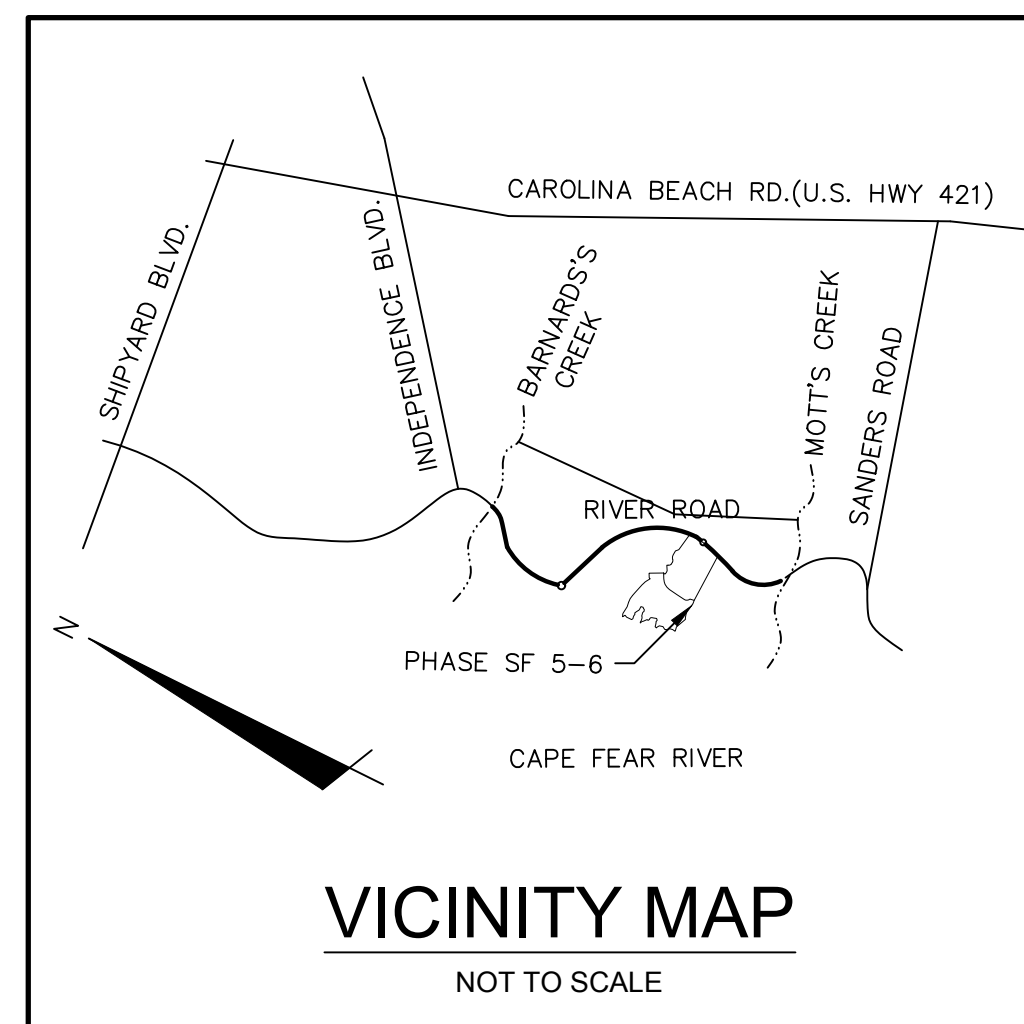
AUGUST 7, 2018

SUBDIVISION REVISION BOARD SUBMITTAL



VICINITY MAP

1" = 2,000'



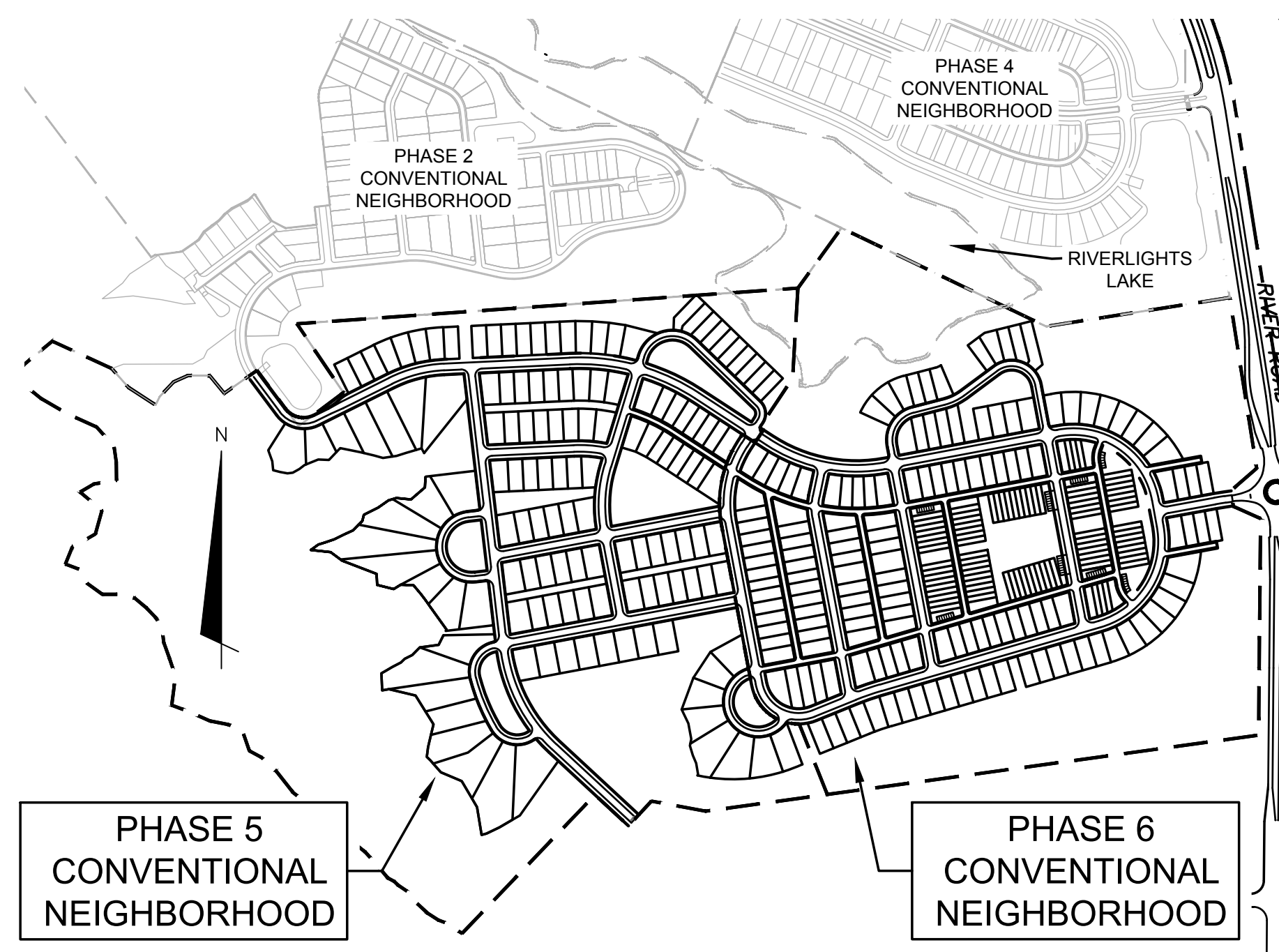
VICINITY MAP

NOT TO SCALE

PRELIMINARY - DO NOT USE
FOR CONSTRUCTION

COUNTY AND AGENCY CONTACTS

- A. City of Wilmington**
Planning Department
102 North Third Street
PO BOX 1810
Wilmington, NC 28402-1810
(910)342-2782
Contact: Brian Chambers
Email: Brian.Chambers@wilmingtonnc.gov
- B. City of Wilmington**
Engineering
212 Operations Center Drive
PO BOX 1810
Wilmington, NC 28402-1810
(910) 341-7807
Contact: Rob Gordon
Email: Rob.Gordon@wilmingtonnc.gov
- C. New Hanover County**
Sediment and Erosion Control
230 Government Center Drive, Suite 160
Wilmington, NC 28403
(910) 798-7432
Contact: Beth Wetherill
Email: BWetherill@nhcgov.com
- D. Cape Fear Public Utility Authority**
235 Government Center Drive
Wilmington, NC 28403
(910) 332-6626
Contact: David Dailey
Email: David.Dailey@cfpua.org
- E. NCDENR**
Division of Environmental Health
Public Water Supply Section
1634 Mail Service Center
Raleigh, NC 27699-1634
(919) 707-9076
Contact: Brad Whitman
Email: Bradley.Whitman@ncdenr.gov



VICINITY MAP

1"=500'

SHEET LIST TABLE		
SHEET NUMBER	SHEET TITLE	SHEET DESCRIPTION
1	G-001	COVER
2	CX-101	EXISTING CONDITIONS
3	CS-100	OVERALL SITE PLAN
4	CS-101	SF-5 SITE PLAN
5	CS-102	SF-5 SITE PLAN
6	CS-103	SF-6 SITE PLAN
7	CS-104	SF-6 SITE PLAN
8	CS-105	SF-6 SITE PLAN
9	CU-101	SF-5 UTILITIES PLAN
10	CU-102	SF-5 UTILITIES PLAN
11	CU-103	SF-6 UTILITIES PLAN
12	CU-104	SF-6 UTILITIES PLAN
13	CL-101	LANDSCAPE CONCEPT ROADWAY TYPICAL SECTIONS

PROJECT DATA

NAME OF PROJECT:
RIVERLIGHTS- PHASE 5/6 CONVENTIONAL NEIGHBORHOOD
MASONBORO TOWNSHIP, WILMINGTON
NEW HANOVER COUNTY, NORTH CAROLINA

OWNER/DEVELOPER:
NNP IV-CAPE FEAR RIVER, LLC
109 PIER MASTER POINT, SUITE 209
WILMINGTON, NC 28412
PHONE: (910)442-2846
CONTACT: ANDY KERKHOFF
EMAIL: AKERKHOFF@NEWLANDCO.COM

PREPARED BY:
MCKIM & CREED, INC
243 NORTH FRONT ST
WILMINGTON, NC 28401
PHONE: (910)343-1048
CONTACT: KATHRYN ESPINOZA, PE
EMAIL: KESPINOZA@MCKIMCREED.COM



Know what's below.
Call before you dig.



NORTH AMERICA SEKISUI HOUSE, LLC



RIVERLIGHTS™



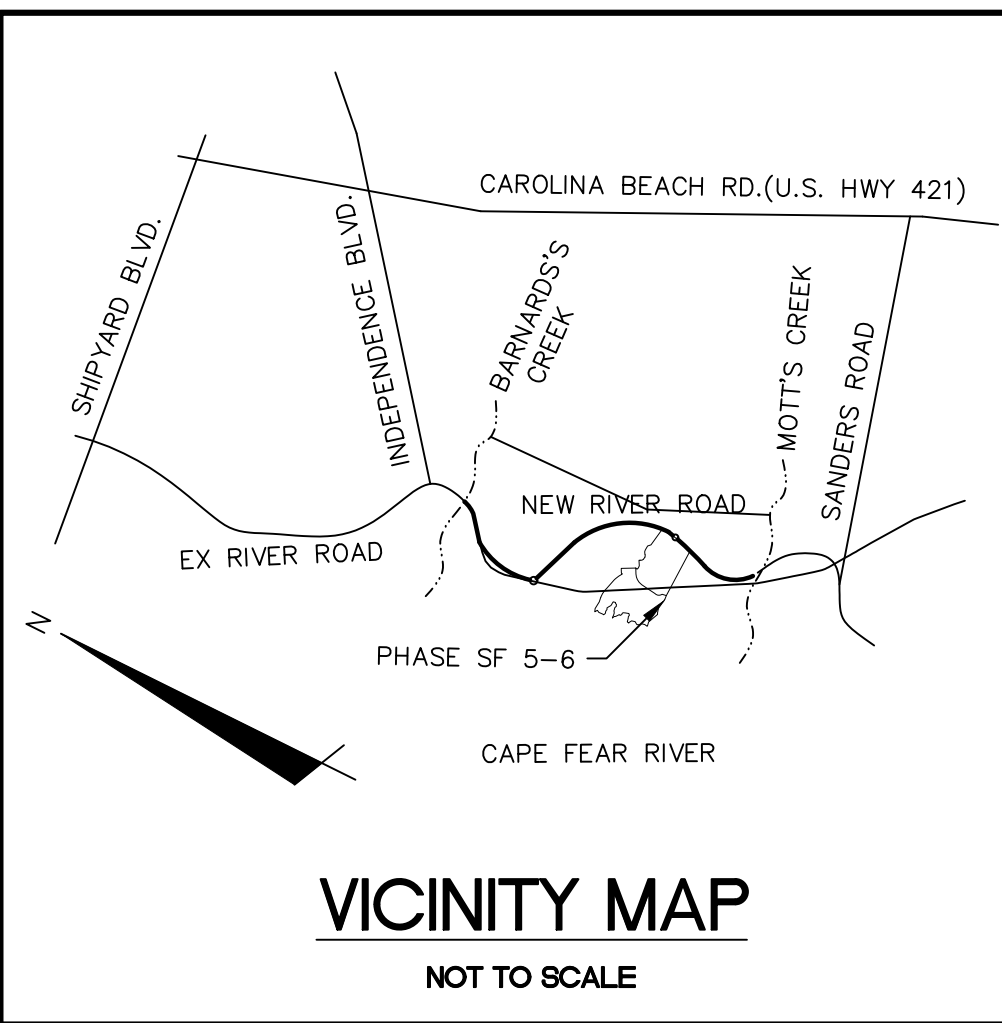
243 North Front Street
Wilmington, North Carolina 28401
Phone: (910)343-1048 , Fax: (910)251-8282

License: F-1222

www.mckimcreed.com

WATER AND SEWER DEMAND:

- 1. WATER 0 GPD (CURRENT USE)
- 2. WATER 134,640 GPD (PROPOSED USE)
- 3. SEWER 0 GPD (CURRENT USE)
- 4. SEWER 134,640 GPD (PROPOSED USE)



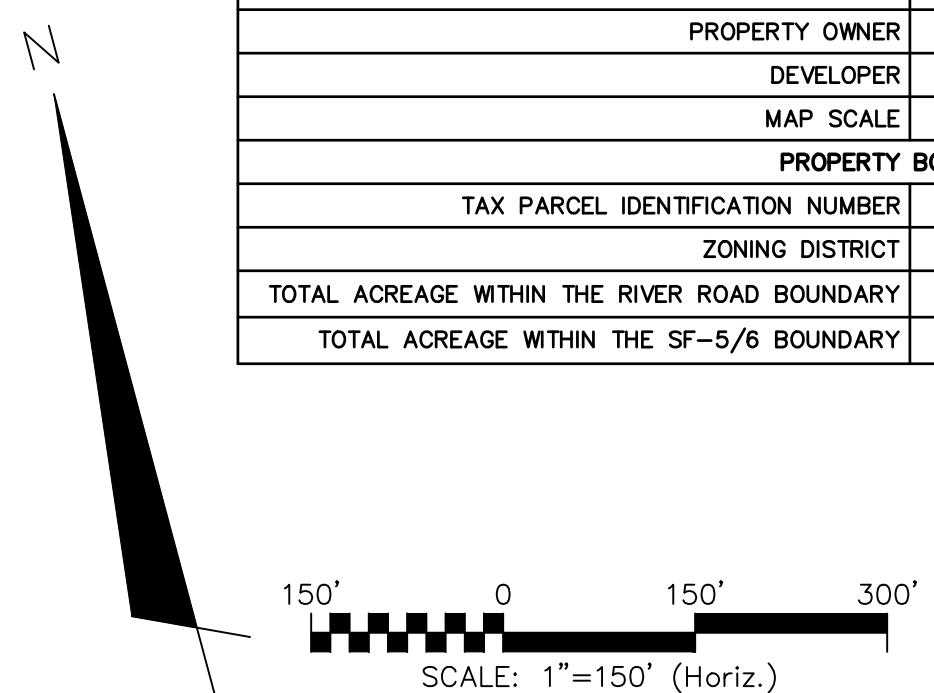
LEGEND

SS	SS	SANITARY SEWER MAIN
PDC	PDC	EXISTING PRIVATE DRAINAGE EASEMENT
FM	FM	EXISTING FORCE MAIN
WM	WM	EXISTING WATER LINE

GENERAL NOTES:

- FLOODPLAIN INFORMATION WAS OBTAINED FROM NC FLOODPLAIN MAPPING FLOOD RISK INFORMATION SYSTEM PROGRAM. RIVERLIGHTS IS LOCATED WITHIN FIRM MAP 3720312400K, PANEL 3124 AS REVISED JUNE 02, 2006.
- WETLANDS SHOWN IN THIS PORTION OF RIVERLIGHTS WERE DESCRIBED AS POCOSIN (25' SETBACK) AND BRACKISH (75' SETBACK). CONSERVATION RESOURCE SETBACK LINES WERE GENERATED OUTSIDE OF THE RESOURCE BASED ON THE DESIGNATION.
- FINISHED FLOOR ELEVATIONS OFF ALL INHABITABLE STRUCTURES WILL BE MIN. 2-FEET ABOVE BASE FLOOD ELEVATION. CLOMR PROCESS IS CURRENTLY BEING COORDINATED WITH THE CITY OF WILMINGTON FLOODPLAIN MANAGER AND FEMA FOR LOT FILL AREA WITHIN EXISTING FLOODPLAIN.
- RIVERLIGHTS CONVENTIONAL NEIGHBORHOOD DOES NOT CONTAIN ANY LOCAL, STATE, OR FEDERALLY RECOGNIZED HISTORIC STRUCTURES OR ARCHEOLOGICAL SITES ON SITE. RIVERLIGHTS WAS ISSUED A NOTICE OF NO FURTHER ACTION LETTER DATED JUNE 2, 2008 FOLLOWING COMPLETION OF AN EA/SEPA DOCUMENT.
- PLATS AND DOCUMENTS SHALL BE RECORDED TO PROVIDE PERPETUAL PROTECTIONS FOR CONSERVATION RESOURCES AND BUFFERS AND PROHIBIT IMPERVIOUS SURFACES WITHIN THE BUFFER, UNLESS EXCEPTIONS ARE PROVIDED BY THE LAND DEVELOPMENT CODE (LDC).
- ANY IMPROVEMENTS ENCRDACHING INTO THE CONSERVATION RESOURCE SETBACK AND/OR PRIMARY CONSERVATION AREA BUFFERS SHALL BE IN ACCORDANCE WITH 18-341 AND 18-433, RESPECTIVELY.

SITE DATA TABLE		SINGLE FAMILY - PHASE 5 & 6		ADJACENT PROPERTY	
GENERAL INFORMATION					
APPLICANT NAME	NNP IV- CAPE FEAR RIVER, LLC		PROPERTY OWNER	NNP IV CAPE FEAR RIVER LLC	
SITE ADDRESS	4410 RIVER ROAD		ADJACENT PROPERTY	SEVENTY WEST BUILDERS INC	
PROPERTY OWNER	NNP IV- CAPE FEAR RIVER, LLC		ZONING	R-7/CD CLUSTER	
DEVELOPER	NNP IV- CAPE FEAR RIVER LLC				
MAP SCALE	1"=150'				
PROPERTY BOUNDARY					
TAX PARCEL IDENTIFICATION NUMBER	R07000-006-009-000				
ZONING DISTRICT	R-7/CD CLUSTER				
TOTAL ACREAGE WITHIN THE RIVER ROAD BOUNDARY	1,329.41 ACRES (57,909,099.6 SF)				
TOTAL ACREAGE WITHIN THE SF-5/6 BOUNDARY	175.36 ACRES (7,638,658 SF)				



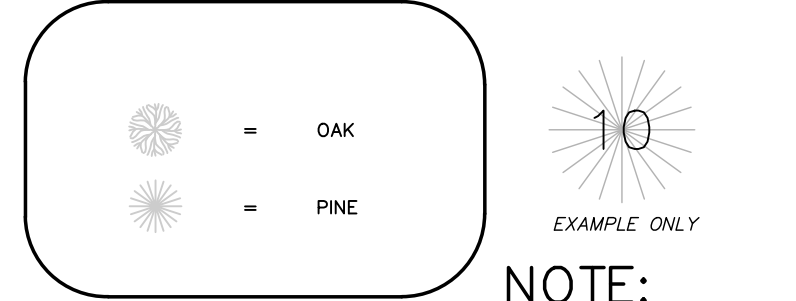
SITE DATA TABLE		SINGLE FAMILY - PHASE 5 AND 6	
VICINITY			
VICINITY MAP	SEE CX-101		
TOPOGRAPHY AND DRAINAGE			
2-FEET TOPOGRAPHY MINIMUM INTERVAL	SEE CX-101		
DATE OF TOPOGRAPHY DATA	5/5/2015		
100-YR FLOODPLAIN LINE	SEE CX-101		
LOCATION OF NATURAL WATER FEATURES	LOCATION	CLASSIFICATION	
DITCHES	SEE CX-101	NON-JURISDICTIONAL	
STREAMS	N/A		
CREEKS	N/A		
FLOOD PRONE AREAS			
SEE CX-101			
AREAS OF NATURALLY CONCENTRATED SURFACE DRAINAGE			
N/A			
SOIL			
SOIL TYPE(S) AND BOUNDARIES	SEE CX-101		
NORTH CAROLINA COASTAL AREA MANAGEMENT AD INFORMATION			
CAMA AREA OF ENVIRONMENTAL CONCERN	SEE CX-101		
SETBACKS	75 FT		
CAMA LAND USE CLASSIFICATION(S)	TRANSITION/CONSERVATION		
CONSERVATION RESOURCE REGULATIONS			
PRESENCE OF CONSERVATION RESOURCE	PRESENCE; SEE CX-101		
SETBACKS	TABLE; SEE CX-101		
VEGETATED BUFFER	35'; SEE CX-101		
HISTORIC AND ARCHEOLOGICAL SITES			
LOCAL, STATE, OR FEDERALLY RECOGNIZED HISTORIC STRUCTURE(S) OR ARCHEOLOGICAL RESOURCES	NOT PRESENT		
LOCATION	N/A		
CEMETERIES			
CEMETERIES, BURIAL SITES, OR BURIAL GROUNDS?	NOT PRESENT		
FORESTED AREAS			
BOUNDARIES OF FORESTED AREAS	SEE CX-101		
DOMINANT SPECIES	OAK, PINE		
WETLANDS			
404/SECTION 10 WETLAND LOCATION	PRESENCE; SEE CX-101		
METHOD OF DETERMINATION	ENVIRONMENTAL EVALUATION		
ENDANGERED SPECIES OR HABITAT			
ENDANGERED SPECIES OR HABITAT	NOT PRESENT		
AUTOMOBILE, BICYCLE, PEDESTRIAN, OR TRANSIT FACILITIES			
EXISTING OR PROPOSED THOROUGHFARES, BIKE ROUTES, PEDESTRIAN SIDEWALKS OR TRAILS, AND TRANSIT FACILITIES	SIDEWALK, MULTI-USE PATH CONNECTION		

CONSERVATION RESOURCE SETBACK TABLE

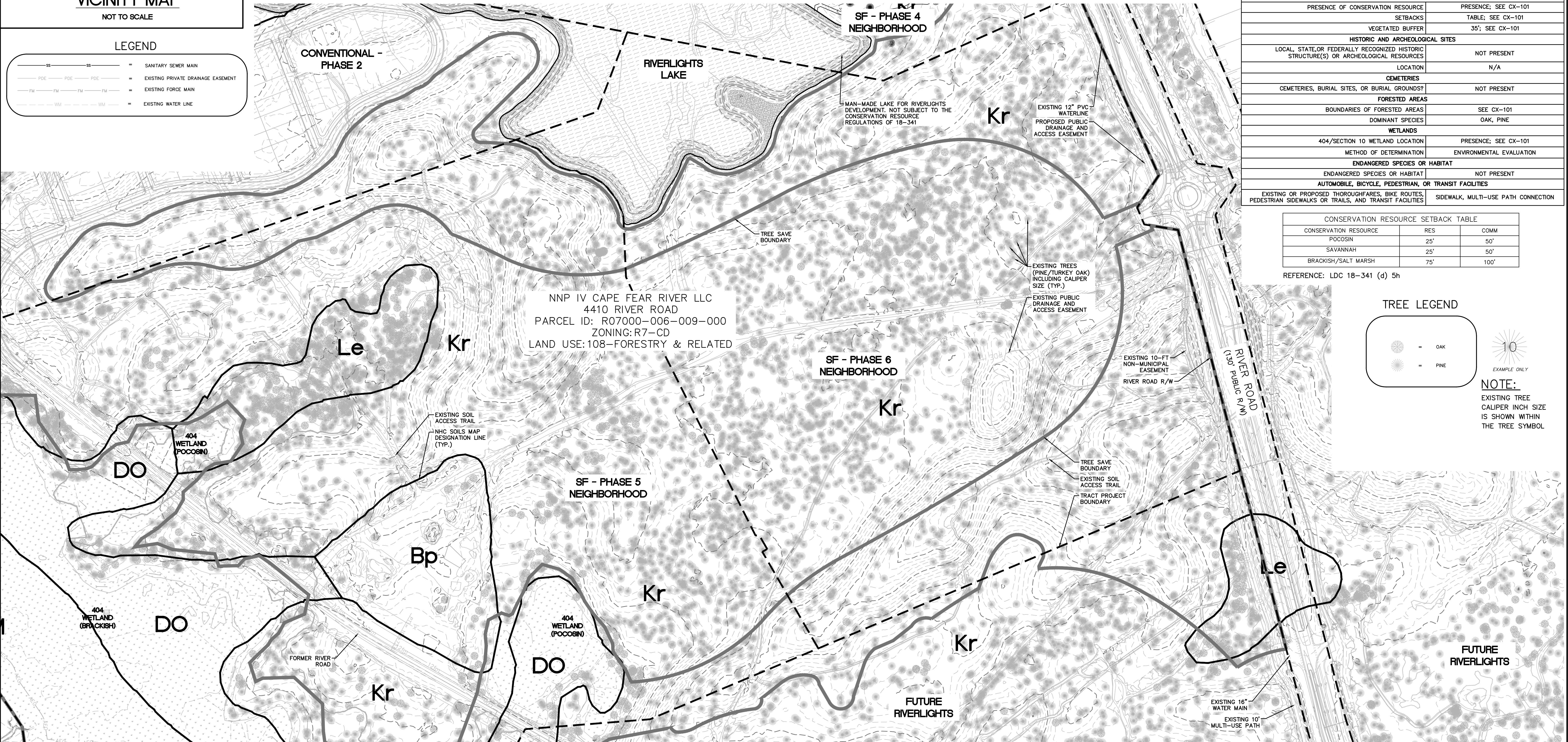
CONSERVATION RESOURCE	RES	COMM
POCOSIN	25'	50'
SAVANNAH	25'	50'
BRACKISH/SALT MARSH	75'	100'

REFERENCE: LDC 18-341 (d) 5h

TREE LEGEND



NOTE:
EXISTING TREE CALIPER INCH SIZE IS SHOWN WITHIN THE TREE SYMBOL



REVNO.	DESCRIPTIONS	DATE
A	CITY OF WILMINGTON SUBDIVISION REVIEW BOARD	08/07/2016
	REVISIONS	

PRELIMINARY - DO NOT USE FOR CONSTRUCTION

SEAL

MCKIM & CREED
243 North Front Street
Wilmington, North Carolina 28401
Phone: (910)343-1048, Fax: (910)251-8282
License: F-1222
www.mckimcreed.com

RIVERLIGHTS™
NASH
NORTH AMERICA SEKISUI HOUSE, LLC

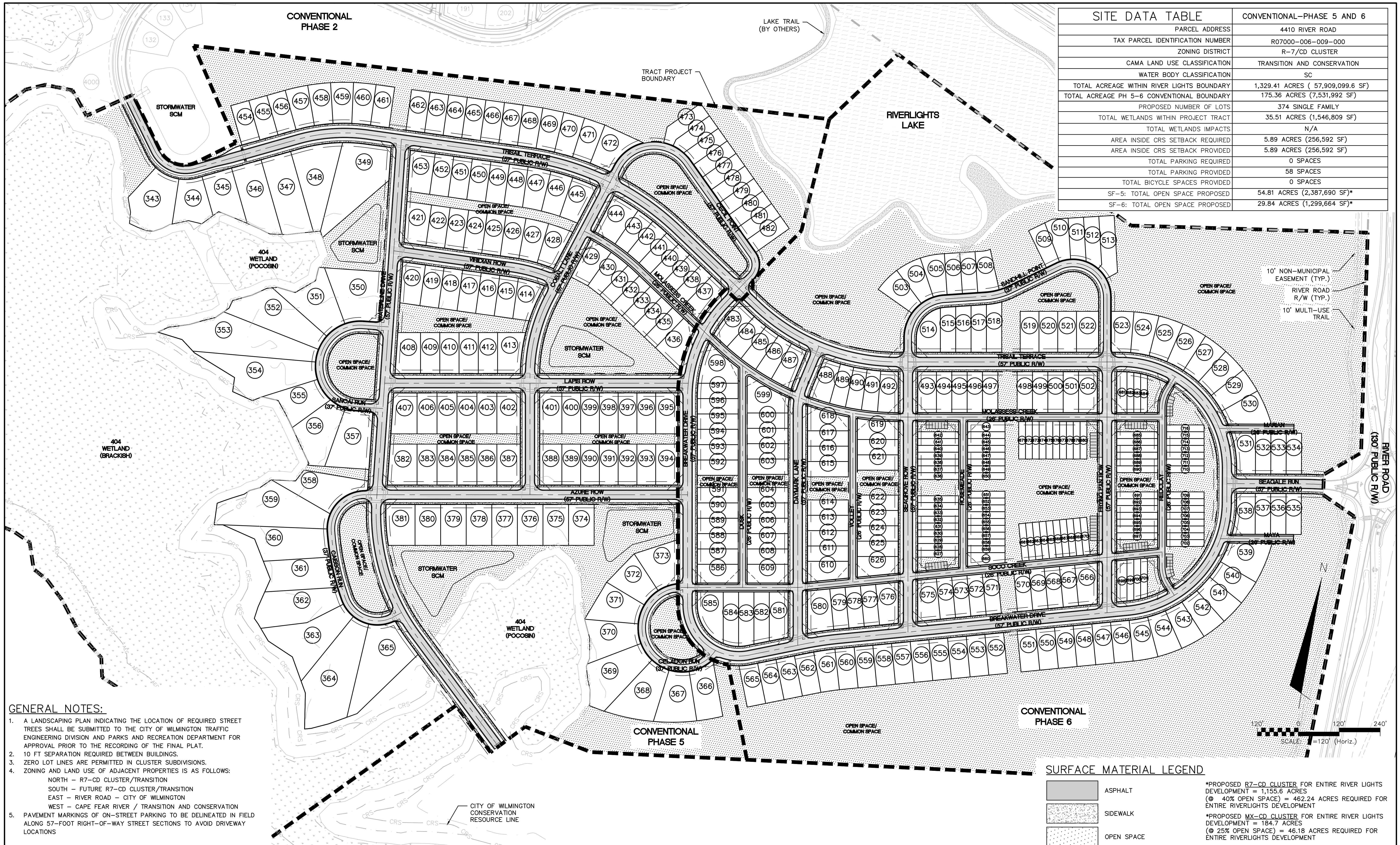
RIVER LIGHTS SINGLE FAMILY PHASE 5 & 6
MASONBORO TOWNSHIP, WILMINGTON, NEW HANOVER COUNTY, NORTH CAROLINA
EXISTING CONDITIONS

DATE: 08/06/2016	SCALE: 1"=150'	MAC FILE NUMBER: CX-101
MCE PROJ. # 02735-0213	HORIZONTAL: 1"=150'	DRAWING NUMBER: 2
DRAWN: DCO/EEM	VERTICAL: N/A	REVISION: A
DESIGNED: DCO/EEM		
CHECKED: RMC		
PROJ. MGR.: KCBE		
STATUS: PRELIMINARY DESIGN NOT FOR CONSTRUCTION		

CONVENTIONAL
PHASE 2

LAKE TRAIL
(BY OTHERS)

SITE DATA TABLE		CONVENTIONAL-PHASE 5 AND 6
PARCEL ADDRESS	4410 RIVER ROAD	
TAX PARCEL IDENTIFICATION NUMBER	R07000-006-009-000	
ZONING DISTRICT	R-7/CD CLUSTER	
CAMA LAND USE CLASSIFICATION	TRANSITION AND CONSERVATION	
WATER BODY CLASSIFICATION	SC	
TOTAL ACREAGE WITHIN RIVER LIGHTS BOUNDARY	1,329.41 ACRES (57,909,099.6 SF)	
TOTAL ACREAGE PH 5-6 CONVENTIONAL BOUNDARY	175.36 ACRES (7,531,992 SF)	
PROPOSED NUMBER OF LOTS	374 SINGLE FAMILY	
TOTAL WETLANDS WITHIN PROJECT TRACT	35.51 ACRES (1,546,809 SF)	
TOTAL WETLANDS IMPACTS	N/A	
AREA INSIDE CRS SETBACK REQUIRED	5.89 ACRES (256,592 SF)	
AREA INSIDE CRS SETBACK PROVIDED	5.89 ACRES (256,592 SF)	
TOTAL PARKING REQUIRED	0 SPACES	
TOTAL PARKING PROVIDED	58 SPACES	
TOTAL BICYCLE SPACES PROVIDED	0 SPACES	
SF-5: TOTAL OPEN SPACE PROPOSED	54.81 ACRES (2,387,690 SF)*	
SF-6: TOTAL OPEN SPACE PROPOSED	29.84 ACRES (1,299,664 SF)*	



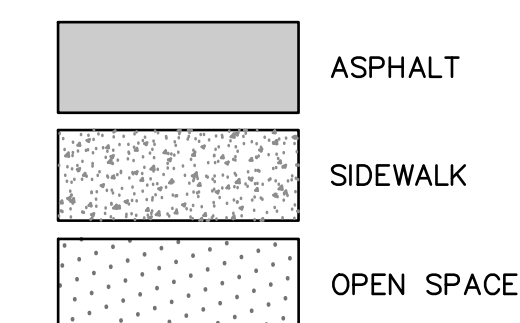
GENERAL NOTES:

- A LANDSCAPING PLAN INDICATING THE LOCATION OF REQUIRED STREET TREES SHALL BE SUBMITTED TO THE CITY OF WILMINGTON TRAFFIC ENGINEERING DIVISION AND PARKS AND RECREATION DEPARTMENT FOR APPROVAL PRIOR TO THE RECORDING OF THE FINAL PLAT.
- 10 FT SEPARATION REQUIRED BETWEEN BUILDINGS.
- ZERO LOT LINES ARE PERMITTED IN CLUSTER SUBDIVISIONS.
- ZONING AND LAND USE OF ADJACENT PROPERTIES IS AS FOLLOWS:
 NORTH - R7-CD CLUSTER/TRANSITION
 SOUTH - FUTURE R7-CD CLUSTER/TRANSITION
 EAST - RIVER ROAD - CITY OF WILMINGTON
 WEST - CAPE FEAR RIVER / TRANSITION AND CONSERVATION
- PAVEMENT MARKINGS OF ON-STREET PARKING TO BE DELINEATED IN FIELD ALONG 57-FOOT RIGHT-OF-WAY STREET SECTIONS TO AVOID DRIVEWAY LOCATIONS

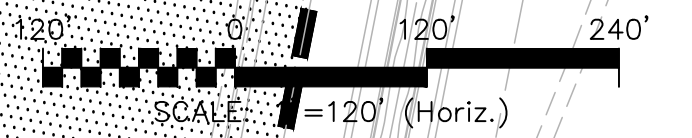
CONVENTIONAL
PHASE 6

CONVENTIONAL
PHASE 5

SURFACE MATERIAL LEGEND



*PROPOSED R7-CD CLUSTER FOR ENTIRE RIVER LIGHTS DEVELOPMENT = 1,155.6 ACRES
 (@ 40% OPEN SPACE) = 462.24 ACRES REQUIRED FOR ENTIRE RIVERLIGHTS DEVELOPMENT
 *PROPOSED MX-CD CLUSTER FOR ENTIRE RIVER LIGHTS DEVELOPMENT = 184.7 ACRES
 (@ 25% OPEN SPACE) = 46.18 ACRES REQUIRED FOR ENTIRE RIVERLIGHTS DEVELOPMENT



REV. NO.	DESCRIPTIONS / REVISIONS	DATE
A	CITY OF WILMINGTON SUBDIVISION REVIEW BOARD	08/07/2018

PRELIMINARY -
DO NOT USE FOR
CONSTRUCTION

SEAL

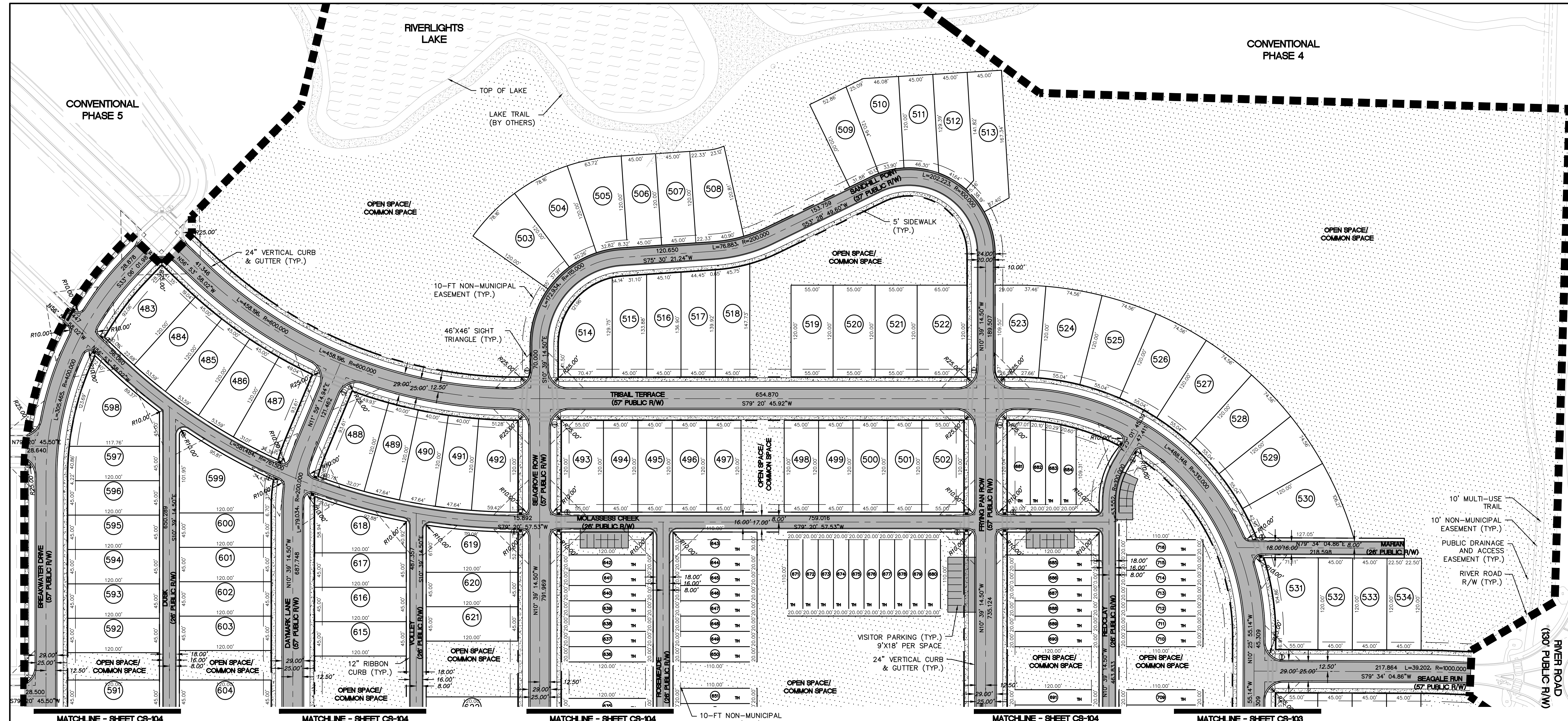
MCKIM & CREED
 243 North Front Street
 Wilmington, North Carolina 28401
 Phone: (910)343-1048, Fax: (910)251-8282
 License: F-1222
 www.mckimcreed.com



**RIVER LIGHTS SINGLE FAMILY
PHASE 5 & 6**
 MASONBORO TOWNSHIP, WILMINGTON, NEW HANOVER COUNTY, NORTH CAROLINA

OVERALL SITE PLAN

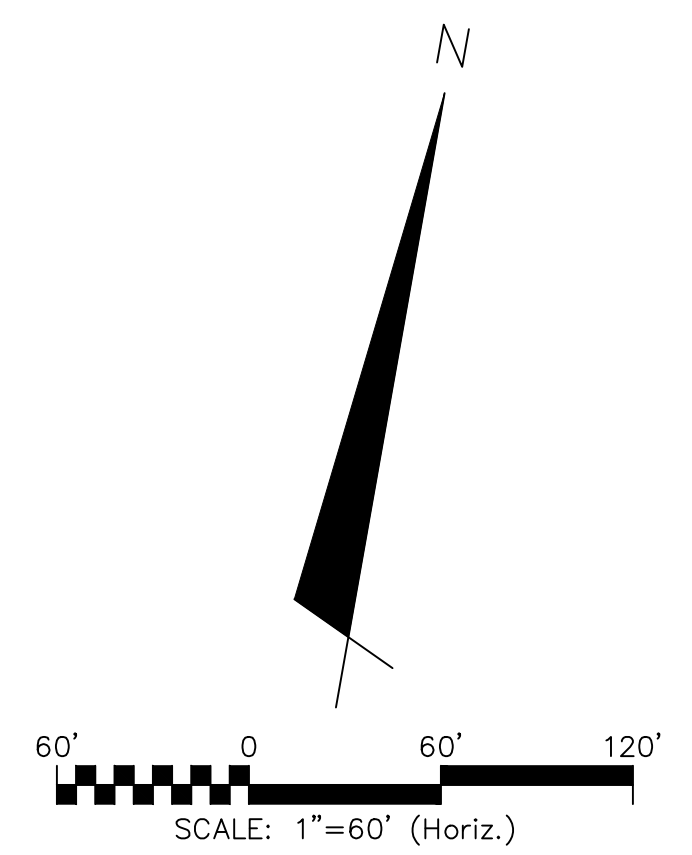
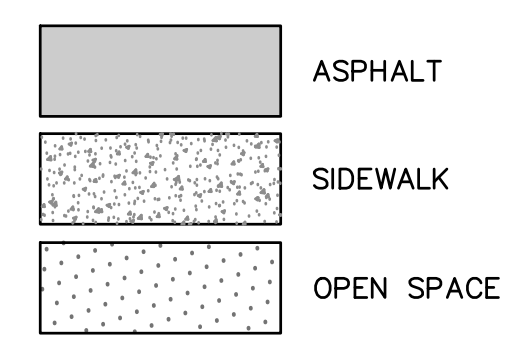
DATE: 08/06/2018	SCALE: 1"=120'	MAC FILE NUMBER: CS-100
MCE PROJ. #: 02735-0213	HORIZONTAL: 1"=120'	DRAWING NUMBER: 3
DRAWN: DCO/EEM	VERTICAL: N/A	REVISION: A
DESIGNED: DCO/EEM	STATUS: PRELIMINARY DESIGN	
CHECKED: RMC	NOT FOR CONSTRUCTION	
PROJ. MGR: KCB		



GENERAL NOTES:

1. A LANDSCAPING PLAN INDICATING THE LOCATION OF REQUIRED STREET TREES SHALL BE SUBMITTED TO THE CITY OF WILMINGTON TRAFFIC ENGINEERING DIVISION AND PARKS AND RECREATION DEPARTMENT FOR APPROVAL PRIOR TO THE RECORDING OF THE FINAL PLAT.
2. 10 FT SEPARATION REQUIRED BETWEEN BUILDINGS.
3. ZERO LOT LINES ARE PERMITTED IN CLUSTER SUBDIVISIONS.
4. ZONING AND LAND USE OF ADJACENT PROPERTIES IS AS FOLLOWS:
 NORTH - R7-CD CLUSTER/TRANSITION
 SOUTH - FUTURE R7-CD CLUSTER/TRANSITION
 EAST - RIVER ROAD - CITY OF WILMINGTON
 WEST - CAPE FEAR RIVER / TRANSITION AND CONSERVATION
5. PAVEMENT MARKINGS OF ON-STREET PARKING TO BE DELINEATED IN FIELD ALONG 57'-FOOT RIGHT-OF-WAY STREET SECTIONS TO AVOID DRIVEWAY LOCATIONS
6. SEE SHEET CL-101 (13) FOR ROADWAY TYPICAL SECTIONS.
7. LOTS MARKED "TH" ARE PLATTED FOR TOWNHOMES.

SURFACE MATERIAL LEGEND



REV. NO.	DESCRIPTIONS / REVISIONS	DATE
A	CITY OF WILMINGTON SUBDIVISION REVIEW BOARD	08/07/2018

PRELIMINARY -
 DO NOT USE FOR
 CONSTRUCTION

SEAL

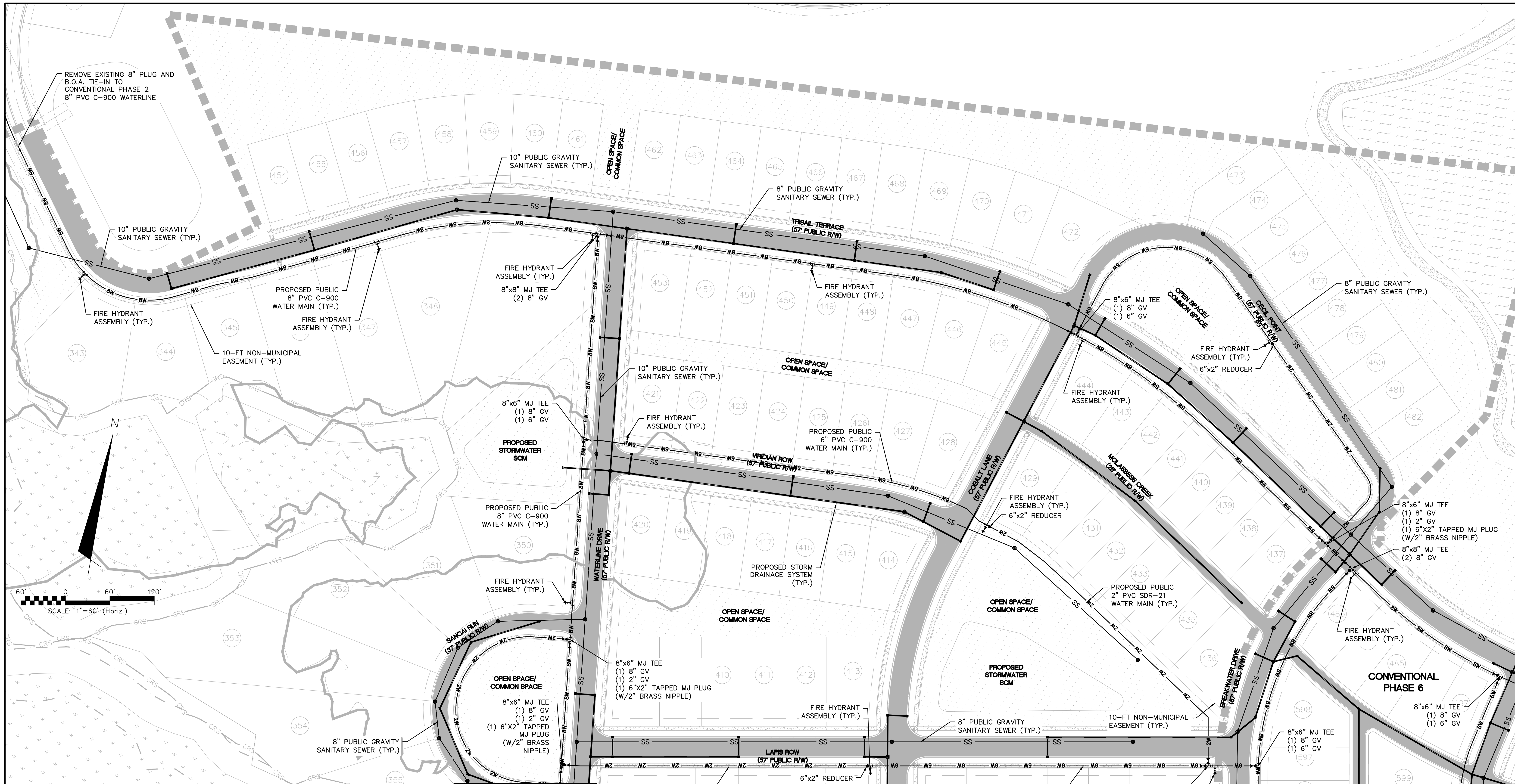
243 North Front Street
 Wilmington, North Carolina 28401
 Phone: (910)343-1048, Fax: (910)251-8282
 License: F-1222
 www.mckimcreed.com

NORTH AMERICA SENSUS HOUSE, LLC
 RIVERLIGHTS

**RIVER LIGHTS SINGLE FAMILY
 PHASE 5 & 6**
 MASONBORO TOWNSHIP, WILMINGTON, NEW HANOVER COUNTY, NORTH CAROLINA
SF-6 SITE PLAN

DATE:	08/06/2018
MCE PROJ. #	02735-0213
DRAWN	DCO/EEM
DESIGNED	DCO/EEM
CHECKED	RMC
PROJ. MGR.	KCBE

SCALE	MAC FILE NUMBER
HORIZONTAL: 1"=60'	CS-103
VERTICAL: N/A	DRAWING NUMBER
	6
STATUS: PRELIMINARY DESIGN	REVISION
NOT FOR CONSTRUCTION	A



CAPE FEAR PUBLIC UTILITY AUTHORITY STANDARD NOTES:

- SEWER GUARDS REQUIRED AT ALL MANHOLES. STAINLESS STEEL SEWER GUARDS REQUIRED AT MANHOLES LOCATED IN TRAFFIC AREAS.
- WATER AND SEWER SERVICES SHALL BE PERPENDICULAR TO MAIN AND TERMINATE AT RIGHT-OF-WAY LINE. SEWER SERVICES IN CUL-DE-SACS ARE REQUIRED TO BE PERPENDICULAR, OR MUST ORIGINATE IN END OF LINE MANHOLE AND TERMINATE IN RIGHT-OF-WAY LINE.
- ALL SERVICES TYING INTO DUCTILE IRON MAINS SHALL BE CONSTRUCTED OF CLASS 50, DIP, WITH PROTECTO 401 CERAMIC EPOXY LINING.
- MINIMUM 10' UTILITIES EASEMENT PROVIDED ALONG THE FRONTAGE OF ALL LOTS AND AS SHOWN FOR NEW DEVELOPMENTS.
- NO FLEXIBLE COUPLINGS SHALL BE USED.
- ALL STAINLESS STEEL FASTENERS SHALL BE 316.
- CLEANOUTS SHALL BE LOCATED A MINIMUM OF 12 FEET FROM ALL PROPERTY CORNERS. WATER METER BOXES ARE TO BE A MINIMUM OF 5 FEET FROM THE PROPERTY CORNER.

MATCHLINE - SHEET CU-102

UTILITY NOTES:

- ALL VALVES AND FITTINGS TO BE RESTRAINED JOINT OR BLOCKED PER CFPWA STANDARD DETAILS AND SPECIFICATIONS. SEE CFPWA STANDARD DETAIL SHEETS AND UTILITY NOTES G-002.
- VALVE LOCATIONS TO BE FIELD ADJUSTED TO AVOID PLACEMENT WITHIN HANDICAP RAMPS.
- WATER METERS AND CLEAN OUTS TO BE INSTALLED ON STRUCTURE SIDE OF MAIN (NO REVERSE TAPS).

MATCHLINE - SHEET CU-102

MATCHLINE - SHEET CU-102

REV. NO.	DESCRIPTION	DATE

PRELIMINARY - DO NOT USE FOR CONSTRUCTION

SEAL

243 North Front Street
Wilmington, North Carolina 28401
Phone: (910)343-1048, Fax: (910)251-8282
License: F-1222
www.mckimcreed.com

NORTH AMERICA SENSUS HOUSE, LLC

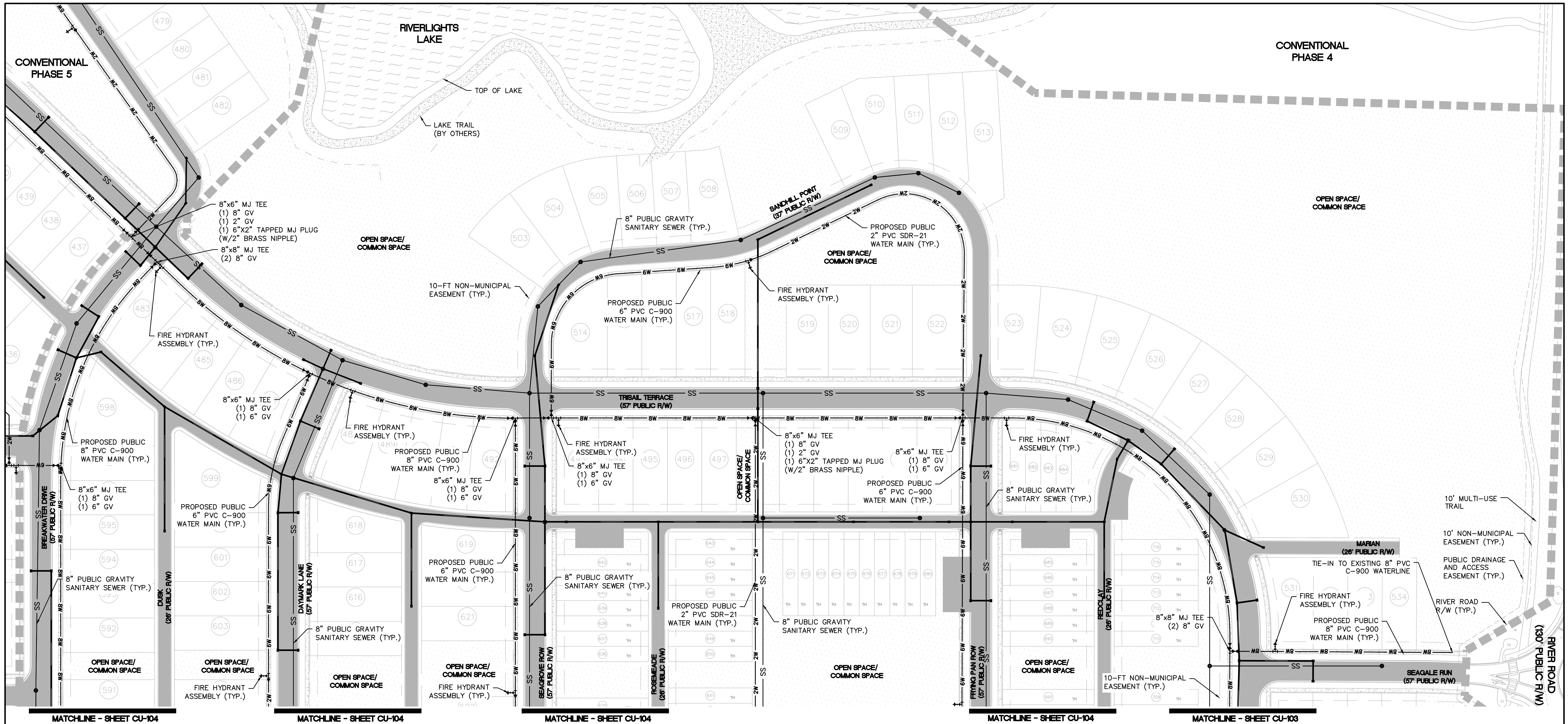
RIVERLIGHTS™

RIVER LIGHTS SINGLE FAMILY PHASE 5 & 6
MASONBORO TOWNSHIP, WILMINGTON, NEW HANOVER COUNTY, NORTH CAROLINA

SF-5 UTILITIES PLAN

DATE: 08/06/2018	SCALE: 1"=60'	MAC FILE NUMBER: CU-101
MCE PROJ. # 02735-0213	HORIZONTAL: 1"=60'	DRAWING NUMBER: 9
DRAWN: DCO/EEM	VERTICAL: N/A	REVISION: A
DESIGNED: DCO/EEM		
CHECKED: RMC		
PROJ. MGR: KCBE		

STATUS: **PRELIMINARY DESIGN**
NOT FOR CONSTRUCTION

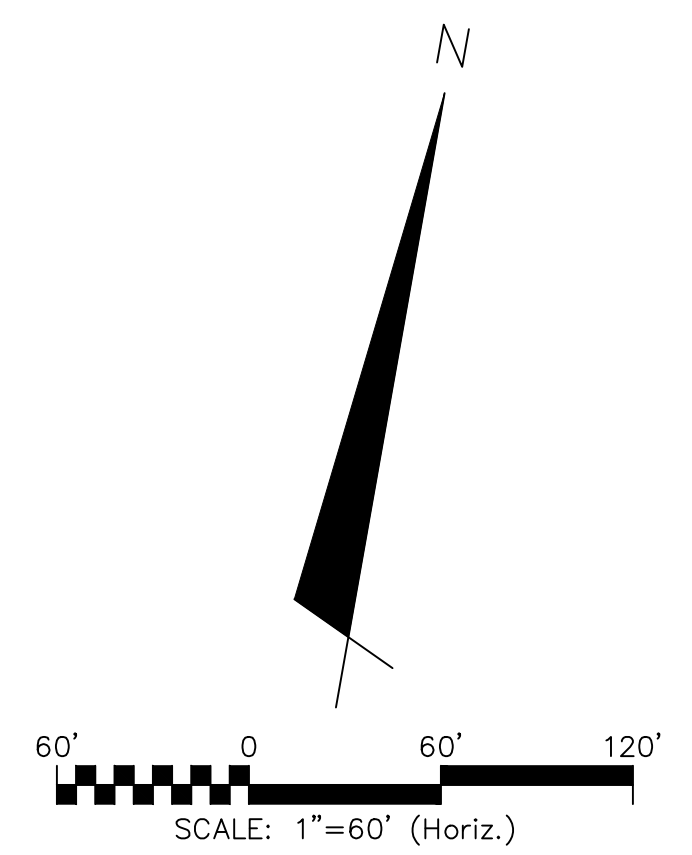


CAPE FEAR PUBLIC UTILITY AUTHORITY STANDARD NOTES:

- SEWER GUARDS REQUIRED AT ALL MANHOLES. STAINLESS STEEL SEWER GUARDS REQUIRED AT MANHOLES LOCATED IN TRAFFIC AREAS.
- WATER AND SEWER SERVICES SHALL BE PERPENDICULAR TO MAIN AND TERMINATE AT RIGHT-OF-WAY LINE. SEWER SERVICES IN CUL-DE-SACS ARE REQUIRED TO BE PERPENDICULAR, OR MUST ORIGINATE IN END OF LINE MANHOLE AND TERMINATE IN RIGHT-OF-WAY LINE.
- ALL SERVICES TYING INTO DUCTILE IRON MAINS SHALL BE CONSTRUCTED OF CLASS 50, DIP, WITH PROTECTO 401 CERAMIC EPOXY LINING.
- MINIMUM 10' UTILITIES EASEMENT PROVIDED ALONG THE FRONTAGE OF ALL LOTS AND AS SHOWN FOR NEW DEVELOPMENTS.
- NO FLEXIBLE COUPLINGS SHALL BE USED.
- ALL STAINLESS STEEL FASTENERS SHALL BE 316.
- CLEANOUTS SHALL BE LOCATED A MINIMUM OF 12 FEET FROM ALL PROPERTY CORNERS. WATER METER BOXES ARE TO BE A MINIMUM OF 5 FEET FROM THE PROPERTY CORNER.

UTILITY NOTES:

- ALL VALVES AND FITTINGS TO BE RESTRAINED JOINT OR BLOCKED PER CFPWA STANDARD DETAILS AND SPECIFICATIONS. SEE CFPWA STANDARD DETAIL SHEETS AND UTILITY NOTES G-002.
- VALVE LOCATIONS TO BE FIELD ADJUSTED TO AVOID PLACEMENT WITHIN HANDICAP RAMPS.
- WATER METERS AND CLEAN OUTS TO BE INSTALLED ON STRUCTURE SIDE OF MAIN (NO REVERSE TAPS).



REV. NO.	DESCRIPTIONS / REVISIONS	DATE
A	CITY OF WILMINGTON SUBDIVISION REVIEW BOARD	08/07/2018

PRELIMINARY -
 DO NOT USE FOR
 CONSTRUCTION

SEAL

243 North Front Street
 Wilmington, North Carolina 28401
 Phone: (910)343-1048, Fax: (910)251-8282
 License: F-1222
 www.mckimcreed.com

NORTH AMERICA SENSUI HOUSE, LLC
 RIVERLIGHTS™

**RIVER LIGHTS SINGLE FAMILY
 PHASE 5 & 6**
 MASONBORO TOWNSHIP, WILMINGTON, NEW HANOVER COUNTY, NORTH CAROLINA
SF-6 UTILITIES PLAN

DATE: 08/06/2018	SCALE: 1"=60'	MAC FILE NUMBER: CU-103
MCE PROJ. #: 02735-0213	HORIZONTAL: 1"=60'	DRAWING NUMBER: 11
DRAWN: DCO/EEM	VERTICAL: N/A	REVISION: A
DESIGNED: DCO/EEM	STATUS: PRELIMINARY DESIGN	
CHECKED: RMC	NOT FOR CONSTRUCTION	
PROJ. MGR: KCBE		

PLANT LIST

SYM	BOTANICAL NAME	COMMON NAME	CAL/RT	MIN. HT.	MIN. SFR.	REMARKS
CANOPY / SHADE / STREET TREES						
ACB	ACER BUERGERIANUM	TRIDENT MAPLE	2-2 1/2"	--	--	--
ACR	ACER RUBRUM OCTOBER GLORY	OCTOBER GLORY RED MAPLE	2-2 1/2"	--	--	--
ACS	ACER SACCHARINUM GREEN MOUNTAIN SUGAR MAPLE	GREEN MOUNTAIN SUGAR MAPLE	2-2 1/2"	--	--	--
BEN	BETULA NIGRA TOUR MEAT HERITAGE	RIVER BIRCH	2-2 1/2"	--	--	--
CAQ	CARYA AQUATICA	WATER HOKORY	2-2 1/2"	--	--	--
QLL	QUERCUS LUTEA	AMERICAN YELLOWWOOD	2-2 1/2"	--	--	--
CHR	CHONANTHUS RETUSUS	CHINESE FRINGE TREE	2-2 1/2"	--	--	--
DIV	DIOSPIROS VIRGINANA	AMERICAN PERSIMMON	2-2 1/2"	--	--	--
FAG	FAGUS GRANDIFLORA	AMERICAN BEECH	2-2 1/2"	--	--	--
FRA	FRAXINUS AMERICANA	WHITE ASH	2-2 1/2"	--	--	--
LIT	LIRIODENDRON TULIPIFERA	TULIP TREE	2-2 1/2"	--	--	--
MAA	MAGNOLIA ACUMINATA	CUCUMBER-TREE	2-2 1/2"	--	--	--
NYS	NYSSA SYLVATICA	BLACK GLIM	2-2 1/2"	--	--	--
PLD	PLATANUS X OBOVATUS	AMERICAN PLANE TREE	2-2 1/2"	--	--	--
QUA	QUERCUS ALBA	WHITE OAK	2-2 1/2"	--	--	--
QUAC	QUERCUS ACUTISERVA	SAWTOOTH OAK	2-2 1/2"	--	--	--
QUB	QUERCUS BICOLOR	SWAMP WHITE OAK	2-2 1/2"	--	--	--
QUC	QUERCUS COCCINEA	SCARLET OAK	2-2 1/2"	--	--	--
QUL	QUERCUS FALCATA	SOUTHERN RED OAK	2-2 1/2"	--	--	--
QUR	QUERCUS LYRATA	OVERCUP OAK	2-2 1/2"	--	--	--
QUN	QUERCUS NIGRA	WATER OAK	2-2 1/2"	--	--	--
QNU	QUERCUS NUTTALLI	NUTTAL OAK	2-2 1/2"	--	--	--
QUP	QUERCUS PALUSTRIS	PIN OAK	2-2 1/2"	--	--	--
QUP	QUERCUS PHELLOS	MILLOW OAK	2-2 1/2"	--	--	--
QUS	QUERCUS SHUMARDII	SHUMARD OAK	2-2 1/2"	--	--	--
TAD	TAXODIUM DISTICHUM	BALD CYPRESS	2-2 1/2"	--	--	--
ZEP	ZELKOVA PARVIFLORA	CHINESE ELM	2-2 1/2"	--	--	--
ZEL	ZELKOVA SEBATA	JAPANESE ZELKOVA	2-2 1/2"	--	--	--
EVERGREEN TREES						
CHT	CHAMAECYPARIS THYROIDES	ATLANTIC WHITE CEDAR	88	6'	--	--
CRZY	CRYPTOMERIA JAPONICA YOSHINO	YOSHINO JAPANESE CEDAR	88	6'	--	--
CRJR	CRYPTOMERIA JAPONICA TRADICANS	TRADICANS JAPANESE CEDAR	88	6'	--	--
DLK	CUNNINGHAMIA LANCEOLATA	CHINA FIR	88	6'	--	--
ILT	ILEX OPACA 'TINGA'	'TINGA' AMERICAN HOLLY	88	6'	--	--
ISOG	ILEX OPACA 'GREENLEAF'	'GREENLEAF' AMERICAN HOLLY	88	6'	--	--
ILV	ILEX VOMITORIA	'YALPON' HOLLY	88	6'	--	--
JUV	JUNIPERUS VIRGINIANA	EASTERN RED CEDAR	88	6'	--	--
MAGA	MAGNOLIA GRANDIFLORA 'ALTA'	'ALTA' SOUTHERN MAGNOLIA	88	6'	--	--
MAGH	MAGNOLIA GRANDIFLORA 'HESSIE'	'HESSIE' SOUTHERN MAGNOLIA	88	6'	--	--
MAGD	MAGNOLIA GRANDIFLORA 'D.L.'	'D.L.' SOUTHERN MAGNOLIA	88	6'	--	--
MAV	MAGNOLIA VIRGINIANA	SWEETBAY MAGNOLIA	88	6'	--	--
PP	PINUS PALUSTRIS	LONGLEAF PINE	88	6'	--	--
PT	PINUS TAEDA	LOBLOLLY PINE	88	6'	--	--
PTH	PINUS THUNDERBOLT	JAPANESE BLACK PINE	88	6'	--	--
PRC	PRINUS CAROLINIANA	CAROLINA CHERRY	88	5'	--	--
QAH	QUERCUS HEMISPHAERICA 'DARLINGTON'	'DARLINGTON' LAUREL OAK	2-2 1/2"	--	--	--
QIV	QUERCUS VIRGINIANA	LIVE OAK	2-2 1/2"	--	--	--
ORNAMENTAL GRASSES						
ANT	ANDROPOGON TENARUM	SPLIT-BEARD BROOMSEDGE	--	--	--	--
AMB	AMPHIPHILA BRISSELIATA	AMERICAN BEACHGRASS	--	--	--	--
BMB	BRIZA MEDIA	QUAKING GRASS	--	--	--	--
CAA	CALAMAGRISTIS ACUTIFOLIA 'CARL FORESTER'	'FEATHER REED GRASS	--	--	--	--
CAB	CALAMAGRISTIS BRACHYOTRIS	KOREAN SEA PINE REED GRASS	--	--	--	--
CHL	CHAMANTHUS LATIFOLIUM	NORTHERN SEA OATS	--	--	--	--
OJE	JANOUS EFFUSUS	COMMON RUSH	--	--	--	--
MUC	MULLEBERGIA CAPILLARIS 'WHITE SWORD'	MUHLY GRASS	--	--	--	--
MUF	MULLEBERGIA FILIPES	SWEETGRASS	--	--	--	--
NAT	NASSELLA TENNESSEANA	MEXICAN FEATHER GRASS	--	--	--	--
PAA	PANICUM FLAVUM 'TONEY BLUE'	SEWY BLUE SWITCH GRASS	--	--	--	--
PAVC	PANICUM VIRGATUM 'COLORED NINE'	SWITCH GRASS	--	--	--	--
PAVN	PANICUM VIRGATUM 'NORTHWOOD'	UPRIGHT SWITCH GRASS	--	--	--	--
PAVS	PANICUM VIRGATUM 'SUNSHINE'	SWITCH GRASS	--	--	--	--
SOL	SCHIZACHYRIUM LITURALE	SEASIDE LITTLE BLUESTEM	--	--	--	--
SSS	SCHIZACHYRIUM SCOPARIUM	LITTLE BLUE STEM	--	--	--	--
SON	SORGHASTRUM NUTANS	INDIAN GRASS	--	--	--	--
SPB	SPARTINA BAKERI	SAND CORDGRASS	--	--	--	--
SPP	SPARTINA PATENS	SALTMEADOW CORDGRASS	--	--	--	--
SPV	SPOROBOLUS VIRGINICUS	SEASHORE DROPSEED	--	--	--	--
UNP	UNDOLO PANICULATA	SEA OATS	--	--	--	--
VIRES						
BC	BIGNONIA CAROLINATA	CROSS VINE	--	--	--	--
CAR	CAMPIDIS RADICANS	TRUMPET CREEPER	--	--	--	--
CAR	CAMPIDIS RADICANS 'YELLOW CREEPER'	'YELLOW CREEPER'	--	--	--	--
CLF	CLIMATIS X ARMADI	EVERGREEN CLIMATIS	--	--	--	--
CLJ	CLIMATIS X JACOVANI	JACKMANS' CLIMATIS	--	--	--	--
FLP	FICUS PUMILA	CLIMBING FIG	--	--	--	--
GES	GESEMIUM SEPERSVIBENS	CAROLINA JESSAMINE	--	--	--	--
HYA	HYDRANGEA ANOMALA PETIOLARIS	CLIMBING HYDRANGEA	--	--	--	--
ROB	ROSA BANKSIAE	LADYBANKS ROSE	--	--	--	--
ROS	ROSA SPECIES	CLIMBING ROSE	--	--	--	--
TRJ	TRICHODENDRON JASMINODES	CONFEDERATE JASMINE	--	--	--	--

SYM	BOTANICAL NAME	COMMON NAME	CAL/RT	MIN. HT.	MIN. SFR.	REMARKS
FLOWERING / UNDERSTORY TREES						
AEP	AESOLUIS PARVIFLUA	BOTTLEBRUSH BUCKEYE	--	8'-10'	--	--
AMA	AMELANCHIER ALBOEA	DOINY SERVICEBERRY	--	8'-10'	--	--
AMC	AMELANCHIER CANADENSIS	SHADLOW SERVICEBERRY	--	8'-10'	--	--
CAC	CAPPANUS CAROLINANA	IRONWOOD	--	8'-10'	--	--
CEC	CERCIS CANADENSIS	EASTERN REDBUD	--	8'-10'	--	--
CHV	CHONANTHUS VIRGINICUS	WHITE FRINGE TREE	--	8'-10'	--	--
COK	CORNUS KOUSA	KOUSA DOGWOOD	--	8'-10'	--	--
CORC	CORNUS FLORIDA	FLOWERING DOGWOOD	--	8'-10'	--	--
CORH	CORNUS FLORIDA 'CHEROKEE PRINCESS'	'CHEROKEE PRINCESS' FLOWERING DOGWOOD	--	8'-10'	--	--
CORH	CORNUS FLORIDA 'CHEROKEE PRINCESS'	'CHEROKEE PRINCESS' FLOWERING DOGWOOD	--	8'-10'	--	--
HAC	HALESA CAROLINA	CAROLINA SILVERBELL	--	8'-10'	--	--
HAV	HAMMELIS VIRGINIANA	WITCHHAZEL	--	8'-10'	--	--
LAI	LAGERSTROMIA INDICA	GRAPE HYDRILE	--	8'-10'	--	--
MAS	MAGNOLIA X SOULANGIANA	SAUDER MAGNOLIA	--	8'-10'	--	--
PIE	PISTACHIA CHINENSIS	CHINESE PISTACHIO	--	8'-10'	--	--
PRM	PRUNUS MUME	FLOWERING APRICOT	--	8'-10'	--	--
PRU	PRUNUS X INCAM 'OKAME'	'OKAME' CHERRY	--	8'-10'	--	--
PRS	PRUNUS SPERULATA 'YUKAWAN'	'YUKAWAN' FLOWERING CHERRY	--	8'-10'	--	--
PRY	PRUNUS YEDENSIS	YOSHINO CHERRY	--	8'-10'	--	--
SUC	SUMAC COPALLINUM	WINGED SUMAC	--	8'-10'	--	--
VA	VITEX AGNUS-CASTUS	CHASTE TREE	--	8'-10'	--	--
EVERGREEN SHRUBS / EVERGREEN PALMS						
CHX	CHAMAECYPARIS ORIENTALIS 'NANA GRACILE'	'NANA' HIKOKI CYPRESS	CONT	12"	12"	FULL DENSE
CYB	CYCAUS REVOLUTA	'KING SAGO'	CONT	12"	12"	FULL DENSE
CYI	CYCAUS TAITINGENSIS	'EMPEROR SAGO'	CONT	12"	12"	FULL DENSE
FAT	FATSIA JAPONICA	'FATSIA'	CONT	12"	12"	FULL DENSE
FAT	FATSIA JAPONICA	'FATSIA'	CONT	12"	12"	FULL DENSE
GAJ	GARDENIA JASMINODES 'ELLEN'S HONEY'	'GARDENIA'	CONT	12"	12"	FULL DENSE
GAJ	GARDENIA JASMINODES 'ELLEN'S HONEY'	'GARDENIA'	CONT	12"	12"	FULL DENSE
IGS	ILEX GLABRA 'SHAMROCK'	'SHAMROCK' HOLLY	CONT	12"	12"	FULL DENSE
IVN	ILEX VOMITORIA 'NANA'	'NANA' YALPON HOLLY	CONT	12"	12"	FULL DENSE
ILK	LICUM AMERITUM	JAPANESE ANISE TREE	CONT	12"	12"	FULL DENSE
JAC	JUNIPERUS CHINENSIS 'SEA GREEN'	'SEA GREEN' JUNIPER	CONT	12"	12"	FULL DENSE
JUN	JUNIPERUS HORIZONTALIS 'SAR HARBOR'	'SAR HARBOR' JUNIPER	CONT	12"	12"	FULL DENSE
MIC	MICHAELIA FOD	'SANTANA' SHRUB	CONT	12"	12"	FULL DENSE
MYC	MYRTICA CERIFERA	'WAMWITILE'	CONT	12"	12"	FULL DENSE
OSP	OSMANTHUS FORTUNDA	'RA OUME'	CONT	12"	12"	FULL DENSE
OSA	OSMANTHUS AMERICANUS	'DEVILWOOD'	CONT	12"	12"	FULL DENSE
PR	PISTACHIA TAIWANICA	'PISTACHIO'	CONT	12"	12"	FULL DENSE
PRM	PRUNUS MUME 'CHINESE PISTACHIO'	'CHINESE PISTACHIO'	CONT	12"	12"	FULL DENSE
SRM	SERENIA REPPENS	'SAW PALMETTO'	CONT	12"	12"	FULL DENSE
VIA	VIBURNUM AVARICUM 'CHINCO'	'CHINCO' VIBURNUM	CONT	12"	12"	FULL DENSE
VB	VIBURNUM X BURKWOODII	'BURKWOOD' VIBURNUM	CONT	12"	12"	FULL DENSE
DECIDUOUS SHRUBS						
BBD	BEGONIA DAVEN	'WINTERBUSH'	CONT	12"	12"	FULL DENSE
CAA	CALICARPA AMERICANA	'AMERICAN BEAUTYBERRY'	CONT	12"	12"	FULL DENSE
CAD	CALICARPA DICHOCARPA 'ISSA'	'ISSA'	CONT	12"	12"	FULL DENSE
CAP	CALYCANTHUS FLOREUS	'SWEET SHRUB'	CONT	12"	12"	FULL DENSE
CAC	CARYOPHYLLUS GLANDULOSUS	'BLUEBEARD'	CONT	12"	12"	FULL DENSE
CAN	CLETHRA ANFOJIA	'SWEET PEPPERBUSH'	CONT	12"	12"	FULL DENSE
COC	CORNUS COGSGYRIA	'SWACKERBUSH'	CONT	12"	12"	FULL DENSE
FOI	FOSTYTHIA X KIBEREDIA	'FOSTYTHIA'	CONT	12"	12"	FULL DENSE
ES	ILEX ORICOLA 'SARDANICE'	'SARDANICE' POSSUM HAW	CONT	12"	12"	FULL DENSE
IVJ	ILEX VERTICILLATA 'TOM DANDY'	'WINTERBERRY'	CONT	12"	12"	FULL DENSE
IVR	ILEX VERTICILLATA 'RED SPIRIT'	'WINTERBERRY'	CONT	12"	12"	FULL DENSE
IVR	IVR	IVR	CONT	12"	12"	FULL DENSE
IVR	IVR	IVR	CONT	12"	12"	FULL DENSE
JAN	JASMINUM NUDIFLORUM	'WINTER JASMINE'	CONT	12"	12"	FULL DENSE
LAC	LAGERSTROMIA INDICA 'CENTRALIA'	'CENTRALIA' DWARF GRAPE HYDRILE	CONT	12"	12"	FULL DENSE
LAD	LAGERSTROMIA INDICA 'GAMMAY'	'GAMMAY' DWARF GRAPE HYDRILE	CONT	12"	12"	FULL DENSE
LAG	LAGERSTROMIA INDICA 'GAMMAY'	'GAMMAY' DWARF GRAPE HYDRILE	CONT	12"	12"	FULL DENSE
LEP	LEUCOPHYLLA FORTNENSIS	'PETERBUSH'	CONT	12"	12"	FULL DENSE
ROK	ROSA RUGOSA	'HARDY ROSE'	CONT	12"	12"	FULL DENSE
ROK	ROSA RADAZZ	'HOKOCOUT ROSE'	CONT	12"	12"	FULL DENSE
GROUNDCOVERS						
GAJ	GARDENIA JASMINODES 'MADAGASCAR'	'MADAGASCAR'	--	--	--	--
HYC	HYPERICUM CALYCINUM	'ST. JOHN'S WORT'	--	--	--	--
IN	IVY	IVY	--	--	--	--
JAC	JUNIPERUS CONFERTA	'SHORE JUNIPER'	--	--	--	--
UMA	UNDOLO PANICULATA	'SEA OATS'	--	--	--	--
US	UNDOLO PANICULATA	'SEA OATS'	--	--	--	--
MAR	MAR	MAR	--	--	--	--
OPJ	OPHIOPOGON JAPONICUS	'MONDO GRASS'	--	--	--	--
SAH	SARCOCOCCA HOOKERIANA	'SWEETBOX'	--	--	--	--

SYM	BOTANICAL NAME	COMMON NAME	CAL/RT	MIN. HT.	MIN. SFR.	REMARKS
PERENNIALS						
ACS	ACANTHUS 'SUMMER BEAUTY'	'BEARS BREECHES'	--	--	--	--
ACH	ACHILLEA MILEFOLIUM	'CORNFLORION GOLD FARKOW'	--	--	--	--
AJR	AJLA REPTANS	'CARPET BUGLE'	--	--	--	--
AWH	ANEMONE 'WINDMILL'	'TEXAS FIRECRACKER'	--	--	--	--
AIT	ASCLEPIAS TUBEROSA	'BUTTERFLY WEED'	--	--	--	--
ASE	ASPIDISTRA ELATOR	'CAST IRON PLANT'	--	--	--	--
ASH	ASTER NOVAE-ANGLIAE	'NEW ENGLAND ASTER'	--	--	--	--
ASR	ASTER TARTARIUS	'TARTARIAN ASTER'	--	--	--	--
BAW	BARBA ALBA	'WHITE WILD HONEY'	--	--	--	--
CAH	CANNA HYBRIS	'CANNIA LILY'	--	--	--	--
CEP	CERANTHODUM PLUMBILOIDES	'LEADWORT'	--	--	--	--
COA	CORONOPSIS AURICULATA 'SUPERBA'	'SUPERBA CORONOPSIS'	--	--	--	--
ECF	ECHINACEA PURPUREA 'MAGNUS'	'MAGNUS PURPLE CONEFLOWER'	--	--	--	--
EBM	EBUTRIUM MACULOSUM 'PATONY'	'JOE PEE WEED'	--	--	--	--
HEA	HELIANTHUS ANGIUSTIFOLIUS	'SWAMP SAMPLOVER'	--	--	--	--
HEL	HELIANTHUS X LEMON QUEEN	'LEMON QUEEN' PERENNIAL SAMPLOVER'	--	--	--	--
HEH	HELIOPSIS HYBRIDUS	'SUNSHINE ROSE'	--	--	--	--
HRI	HIBISCUS MOSSCHEIDTII	'HARDY HIBISCUS'	--	--	--	--
HIC	HIBISCUS COCCINEUS	'SCARLET HIBISCUS'	--	--	--	--
IRV	IRIS VIRGINIANA	'BLUE FLAG'	--	--	--	--
LAC	LANTANA CAMARA	'LANTANA'	--	--	--	--
PEA	PEROVSKIA AFRICANICA 'LITTLE SPIRE'	'SMALL RUSSIAN SAGE'	--	--	--	--
POA	POLYCHOTOMA ACRIFORMIS	'CHRISTMAS FERN'	--	--	--	--